



**KOLTEC**

# **BACKING PAD PRODUCT GUIDE**

**THE BACKING PAD  
SPECIALISTS.**

Sold Exclusively By

 **WENDT USA**

[www.wendtusa.com](http://www.wendtusa.com) | 716-972-0333

## BACKING PADS FOR RESIN FIBER DISCS

Koltec resin fiber disc backing pads are available in multiple styles to best fit the application and maximize performance of the abrasive disc that is being used.

### Smooth, General Purpose

Koltec smooth pads are recommended for general finishing when using grits 60 and finer. The smooth face helps apply a uniform finish. Using fine grits with ribbed pads can sometimes thermoplastic create an uneven or “washboard” surface. These pads are made from a proprietary thermoplastic rubber compound that provides consistent performance over a wide range of temperatures. Each pad comes with the corresponding center nut.



### SMOOTH GENERAL PURPOSE

DIA.	ARBOR	CENTER NUT	SOFT	MEDIUM	FIRM	MAX RPM	BOX QTY.
4	5/8	3/8-24		<b>K151299</b>		15,000	1
4	5/8	M10x1.25		<b>K151300</b>		15,000	
4	7/8	5/8-11		<b>K151298</b>		15,000	
4-1/2	7/8	5/8-11		<b>K151302</b>	K151331	13,000	
4-1/2	7/8	1/2-13		<b>K151328</b>		13,000	
4-1/2	7/8	3/8-24		K151330		13,000	
4-1/2	7/8	M14		<b>K151332</b>		13,000	
5	7/8	5/8-11	K151310	<b>K151304</b>		12,000	
5	7/8	M14		K151305		12,000	
7	7/8	5/8-11	K151312	<b>K151306</b>	K151307	8,500	
9	7/8	5/8-11		<b>K151308</b>		6,600	

### Ribbed, General Purpose

Designed for general, coarse grinding (24-50 grit) applications. The ribbed surface creates a stiffer pad which increases the aggressiveness of the coarse grain. Koltec ribbed pads also incorporate cooling holes in the backing to increase airflow and reduce heat. Each pad comes with a 5/8-11 center nut.



### RIBBED, GENERAL PURPOSE

DIA.	ARBOR	CENTER NUT	FIRM	MAX RPM	BOX QTY.
4-1/2	7/8	5/8-11	<b>K151342</b>	13,000	1
5	7/8	5/8-11	<b>K151338</b>	12,000	
7	7/8	5/8-11	<b>K151344</b>	8,500	

*Bold part numbers denote stock items. Minimum Order Quantity (MOQ) for non-stock items. Call for details.*

## BACKING PADS FOR RESIN FIBER DISCS

Koltec resin fiber disc backing pads are available in multiple styles to best fit the application and maximize performance of the abrasive disc that is being used.

### Ribbed, Heavy Duty - Reinforced

Similar to the Ribbed, General Purpose pad, the Heavy Duty version is reinforced with fiberglass and is more heat resistant. They are the best choice for severe applications as well as coarse grinding on stainless steel and alloys. Each pad comes with a 5/8-11 center nut.

#### RIBBED, HEAVY DUTY - REINFORCED

DIA.	ARBOR	CENTER NUT	FIRM	MAX RPM	BOX QTY.
4-1/2	7/8	5/8-11	<b>K151314</b>	13,000	1
5	7/8	5/8-11	<b>K151316</b>	12,000	
7	7/8	5/8-11	<b>K151318</b>	8,500	



### Molded Rubber with Cooling Spiral

Koltec's "SPIRUB" is a traditional rubber pad with spiral face. The rotation of the disc draws continuous, cool air flow between the pad and disc. Each pad has a metallic core with a 5/8-11 threaded arbor to spin onto the grinder. This makes them ideal when using resin fiber discs with a quick lock hub. SPIRUB pads are available with or without the center nut.

#### MOLDED RUBBER WITH COOLING SPIRAL

DIA.	ARBOR	CENTER NUT	FLEXIBLE	MEDIUM	MAX RPM	BOX QTY.
4-1/2	5/8-11	none		<b>K151751</b>	13,500	1
4-1/2	5/8-11	5/8-11		<b>K151751N</b>	13,000	
5	5/8-11	none		<b>K151752</b>	13,000	
5	5/8-11	5/8-11		<b>K151752N</b>	13,000	
7	5/8-11	none	K151754	<b>K151753</b>	8,600	
7	5/8-11	5/8-11	K151754N	<b>K151753N</b>	8,600	
9	5/8-11	none		K151756	6,600	
9	5/8-11	5/8-11		K151756N	6,600	



## ACCESSORIES AND REPLACEMENT PARTS FOR USE WITH RESIN FIBER DISCS

DESCRIPTION	ITEM	BOX QTY.
5/8-11 replacement center nut for 4-1/2" and 5" resin fiber discs	<b>K151510</b>	1
M14 replacement center nut for 4-1/2" and 5" resin fiber discs	<b>K151512</b>	
5/8-11 replacement center nut for 7" and 9" resin fiber discs	<b>K151514</b>	
M14 replacement center nut for 7" and 9" resin fiber discs	<b>K151516</b>	
Adjustable Spanner Wrench for all center nuts	<b>K151550</b>	



*Bold part numbers denote stock items. Minimum Order Quantity (MOQ) for non-stock items. Call for details.*

## HOLDERS FOR QUICK CHANGE DISCS

Koltec offers three versions of Quick Change holders for use with a wide range of abrasive discs made with Type R and Type S fasteners.

### Rubber Holders on 1/4" Shank

Traditional molded rubber pads are suitable for every day use in most applications. Our standard pads are made in Medium hardness to provide a good blend of flexibility and support. Soft and Firm grades are also available upon request.

RUBBER HOLDERS ON 1/4" SHANK						
DIA.	SHANK	GRADE	TYPE R	TYPE S	MAX RPM	BOX QTY.
3/4"	1/4"	Medium	K151451	K151461	40000	1
1"	1/4"	Medium	<b>K151453</b>	<b>K151462</b>	40,000	
1-1/2"	1/4"	Medium	<b>K151454</b>	<b>K151463</b>	30,000	
2"	1/4"	Medium	<b>K151455</b>	<b>K151464</b>	30,000	
3"	1/4"	Medium	<b>K151456</b>	<b>K151465</b>	20,000	
4"	1/4"	Medium	K151457	K151467	10,000	



### Low Profile Holders on 1/4" Shank

Manufactured from a polymer material in medium hardness. Koltec Low Profile holders are able to provide ample support, but with a thinner profile. They are ideal for working in tight spaces where a thicker pad won't fit.

LOW PROFILE HOLDERS ON 1/4" SHANK						
DIA.	SHANK	GRADE	TYPE R	TYPE S	MAX RPM	BOX QTY.
1"	1/4"	Medium	<b>K151200</b>	<b>K151199</b>	40,000	1
1-1/2"	1/4"	Medium	<b>K151203</b>	<b>K151209</b>	30,000	
2"	1/4"	Medium	<b>K151205</b>	<b>K151211</b>	30,000	
3"	1/4"	Medium	<b>K151207</b>	<b>K151213</b>	20,000	



*Bold part numbers denote stock items. Minimum Order Quantity (MOQ) for non-stock items. Call for details.*

## HOLDERS FOR QUICK CHANGE DISCS

Koltec offers three versions of Quick Change holders for use with a wide range of abrasive discs made with Type R and Type S fasteners.

### Combo QC Holders with 5/8-11 Arbor and 1/4" Shank

A Koltec exclusive! Constructed from a heavy duty polymer, and designed for maximum versatility. Combo holders can be used to operate Quick Change discs on grinders with 1/4" collets, as well as grinders with 5/8-11 spindles.



### COMBO QC HOLDERS WITH 5/8-11 ARBOR AND 1/4" SHANK

DIA.	THREAD	SHANK	GRADE	TYPE R	TYPE S	MAX RPM	BOX QTY.
1-1/2"	5/8-11	1/4"	Medium	K151202	K151208	30,000	1
2"	5/8-11	1/4"	Medium	<b>K151204</b>	<b>K151210</b>	30,000	
3"	5/8-11	1/4"	Medium	<b>K151206</b>	<b>K151212</b>	20,000	

### Adapters for Combo Holders

Note: The following adapters are intended strictly for use with Koltec Combo QC holders. They are not meant to be used with other products. Use with other products may create unsafe conditions.



### ADAPTERS FOR COMBO HOLDERS

DESCRIPTION	ITEM	BOX QTY.
Replacement 5/8-11 to 1/4" shank adapter	<b>K151529</b>	1
Insert adapter for 5/8-11 to 3/8-24 thread	<b>K151536</b>	

*Bold part numbers denote stock items. Minimum Order Quantity (MOQ) for non-stock items. Call for details.*

## BACKING PADS FOR HOOK & LOOP DISCS

These pads have a short J-hook surface designed to grab the nap backing of Hook & Loop or Velour backed abrasive discs. Hook & Loop backings are not intended for use with Surface Conditioning Material. For applications using surface conditioning discs, see the Gripper pad section.

### Hook & Loop Holders on 1/4" Shank

Hook & Loop material bonded to a polymer backing. The diameter of each holder is slightly undersized to allow the operator to work the edge of the abrasive disc. Each of these holders can be used in combination with the Interface pads shown below for softer finishing.

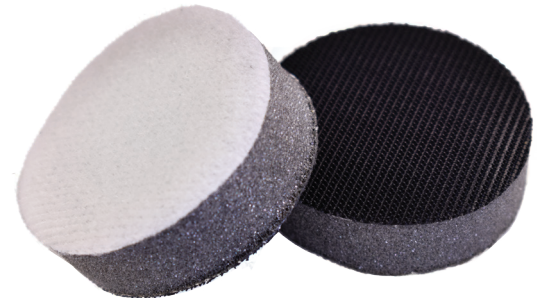


### HOOK & LOOP HOLDERS ON 1/4" SHANK

DIA.	PAD DIA.	SHANK	ITEM NO.	MAX RPM	BOX QTY
1"	0.75"	1/4"	K151057	40,000	1
2"	1.85"	1/4"	K151058	19,000	
3"	2.87"	1/4"	K151059	12,500	

### Interface Pads for Hook & Loop Holders

Varying thicknesses of foam pads which can affix to our standard H&L holders. This allows the operator to change the softness of the pad to match the application. Interface pads can be removed and reused as needed.



### INTERFACE PADS FOR HOOK & LOOP HOLDERS

DIA.	1/4" FOAM	1/2" FOAM	3/4" FOAM	PAD SIDE	DISC SIDE	BOX QTY
2"	K151032		K151033	H&L	H&L	10
3"	K151037	K151005	K151038	H&L	H&L	

*Bold part numbers denote stock items. Minimum Order Quantity (MOQ) for non-stock items. Call for details.*

## BACKING PADS FOR HOOK & LOOP DISCS

These pads have a short J-hook surface designed to grab the nap backing of Hook & Loop or Velour backed abrasive discs. Hook & Loop backings are not intended for use with Surface Conditioning Material. For applications using surface conditioning discs, see the Gripper pad section.

### Cushioned Hook & Loop Holders on 1/4" Shank

Koltec cushioned holders are manufactured with a 3/4" layer of foam for softer finishing. The foam layer eliminates the need for an interface pad.



### CUSHIONED HOOK & LOOP HOLDERS ON 1/4" SHANK

DIA.	SHANK	FOAM LAYER	ITEM NO.	MAX RPM	BOX QTY
2"	1/4"	3/4"	<b>K151052</b>	6000	1
3"	1/4"	3/4"	<b>K151053</b>	6000	

### Hook & Loop Pads for Straight Rotation Tools

Designed for using Hook & Loop discs on tools with straight rotation as opposed to dual-action or random orbit sanders. These pads are manufactured on a strong polymer backing which allows them to be safely used on right angle grinders. They can be also be used wet or dry. Some pads contain a water feed hole for tools used to polish marble and stone with diamond discs. Pads without a foam layer are firmer for more aggressive performance.



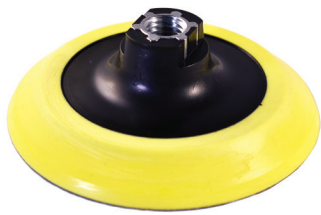
### HOOK & LOOP PADS FOR STRAIGHT ROTATION TOOLS

DIA.	ARBOR	FOAM LAYER	NO WATER HOLE	WATER HOLE	MAX RPM	BOX QTY.
3"	5/8-11	1/2"		<b>K151405</b>	20,190	1
4"	5/8-11	1/2"		<b>K151409</b>	15,000	
4"	5/8-11	None	K151608	<b>K151606</b>	15,000	
4-1/2"	5/8-11	None	K151601		13,000	
5"	5/8-11	1/2"	K151426	<b>K151414</b>	12,000	
5"	5/8-11	None	<b>K151605</b>	K151607	12,000	
6"	5/8-11	1/2"		K151429	10,000	
6"	5/8-11	None	<b>K151602</b>		10,000	
7"	5/8-11	1/2"	K151431	<b>K151430</b>	8,500	
7"	5/8-11	None	K151617		8,500	
8"	5/8-11	1/2"		K151433	7,570	
8"	5/8-11	3/8"	K151434		7,570	
8"	5/8-11	None	K151501		7,570	

*Bold part numbers denote stock items. Minimum Order Quantity (MOQ) for non-stock items. Call for details.*

## BACKING PADS FOR HOOK & LOOP DISCS

These pads have a short J-hook surface designed to grab the nap backing of Hook & Loop or Velour backed abrasive discs. Hook & Loop backings are not intended for use with Surface Conditioning Material. For applications using surface conditioning discs, see the Gripper pad section.



Tapered Edge



Soft Edge



Thick Edge

### Cushioned Hook & Loop Pads for Straight Rotation Tools

Similar to the preceding section, these pads are made for straight rotation tools. However they are not rated for the higher speed of right angle grinders. They are designed for lower speed finishing and polishing tools. Each is made with a flexible polyurethane material for improved finishing capabilities. The Soft Edge version has a flexible lip that helps with light finishing on contoured surfaces. Both the Tapered and Thick Edge styles provide more even support to full face of the abrasive disc.

#### CUSHIONED HOOK & LOOP PADS FOR STRAIGHT ROTATION TOOLS

DIA.	ARBOR	GRADE	TAPERED EDGE	SOFT EDGE	THICK EDGE	MAX. RPM	BOX QTY
5"	5/8-11	Med-Soft	<b>K151416</b>			7,000	1
5"	5/8-11	Med-Soft		<b>K151448</b>	<b>K151447</b>	8,500	
6"	5/8-11	Med-Soft	<b>K151421</b>			5,730	

### Tapered Edge Hook & Loop Pads for Dual Action (DA) Sanders

Koltec Dual Action pads are designed for random orbit sanders. They are molded from flexible polyurethane material and reinforced for strength and support. They have the traditional tapered edge and are available with or without vacuum holes.

#### TAPERED EDGE HOOK & LOOP PADS FOR DUAL ACTION (DA) SANDERS

DIA.	THREAD	GRADE	NO VAC HOLES	5 VAC HOLES	6 VAC HOLES	8 VAC HOLES	MAX. RPM	BOX QTY
3"	5/16-24	Med-Soft	K151736				12,000	1
5"	5/16-24	Med-Soft	<b>K151371</b>	<b>K151367</b>		<b>K151393</b>	12,000	
5"	5/16-24	Med-Firm	<b>K151384</b>	<b>K151386</b>			14,000	
5"	5/16-24	Soft Edge	<b>K151821</b>				10,000	
6"	5/16-24	Med-Soft	<b>K151375</b>		<b>K151373</b>		10,000	
6"	5/16-24	Med-Firm	<b>K151388</b>		<b>K151390</b>	<b>K151391</b>	12,000	



No Vac Holes



6 Vac Holes

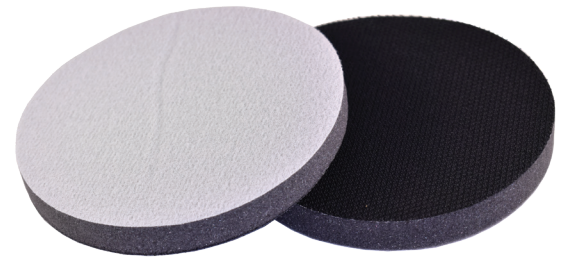
*Bold part numbers denote stock items. Minimum Order Quantity (MOQ) for non-stock items. Call for details.*

## BACKING PADS FOR HOOK & LOOP DISCS

These pads have a short J-hook surface designed to grab the nap backing of Hook & Loop or Velour backed abrasive discs. Hook & Loop backings are not intended for use with Surface Conditioning Material. For applications using surface conditioning discs, see the Gripper pad section.

### Interface Pads for Hook & Loop Pads

Interface pads can be attached to hook & loop backing pads for straight rotation or dual-action tools. The pad affixes to the hook & loop surface and adds a layer of 1/2" foam for softer finishing. Interface pads are also available with vacuum holes for DA Sanders. They can also be used to convert a hook & loop pad to PSA discs.



### INTERFACE PADS FOR HOOK & LOOP PADS

DIA.	THICKNESS	VAC HOLES	PAD SIDE	FOR H&L DISC	FOR PSA DISC	BOX QTY.
5"	1/2"	None	H&L	<b>K151002</b>	<b>K151008</b>	1
5"	1/2"	5	H&L	K151004	K151010	
5"	1/2"	8	H&L	K151006		
6"	1/2"	None	H&L	<b>K151014</b>	<b>K151020</b>	

*Bold part numbers denote stock items. Minimum Order Quantity (MOQ) for non-stock items. Call for details.*

## BACKING PADS FOR PSA DISCS

Koltec offers a variety of pads and holders to support abrasive discs with a pressure sensitive adhesive backing. They can be used with paper, cloth and film backed materials. A vinyl face provides a smooth surface to attach the PSA disc and cleanly releases the used disc.

### PSA Holders on 1/4" Shank

Constructed with a molded polymer pad and screw-in shank. PSA discs can be affixed and removed as needed. The diameter of the backing pad is slightly undersized to allow the operator to use the edge of the disc.



### PSA HOLDERS ON 1/4" SHANK

DIA.	PAD DIA.	SHANK	ITEM NO.	MAX RPM	BOX QTY.
1"	0.91"	1/4"	K151040	40,000	1
1-1/2"	1.17"	1/4"	<b>K151042</b>	19,000	
2"	1.85"	1/4"	<b>K151044</b>	19,000	
3"	2.87"	1/4"	<b>K151048</b>	12,500	



*Tapered Edge*



*Soft Edge*



*Thick Edge*

### Cushioned PSA Pads for Straight Rotation Tools

Cushioned pads are designed for straight rotation, low speed finishing tools. They are not rated for the higher speeds associated with right angle grinders. Each pad is constructed from a flexible polyurethane for softer finishing. Available in three profiles: The Tapered and Thick versions offer full support to the edge of the disc; the Soft Edge has a thin, flexible lip to better conform to contours.

### CUSHIONED PSA PADS FOR STRAIGHT ROTATION TOOLS

DIA.	ARBOR	GRADE	TAPERED EDGE	SOFT EDGE	THICK EDGE	MAX. RPM	BOX QTY
5"	5/8-11	Med-Soft	<b>K151417</b>			7,000	1
5"	5/8-11	Firm	<b>K151419</b>			12,000	
5"	5/8-11	Med-Soft		<b>K151444</b>	<b>K151445</b>	8,500	
6"	5/8-11	Med-Soft	<b>K151418</b>			5,730	

*Bold part numbers denote stock items. Minimum Order Quantity (MOQ) for non-stock items. Call for details.*

## BACKING PADS FOR PSA DISCS

Koltec offers a variety of pads and holders to support abrasive discs with a pressure sensitive adhesive backing. They can be used with paper, cloth and film backed materials. A vinyl face provides a smooth surface to attach the PSA disc and cleanly releases the used disc.

### Tapered PSA Pads for Dual Action (DA) Tools

Dual Action PSA backing pads are made from molded polyurethane foam. The pads are reinforced for strength and support. Koltec DA pads are available in two grades, as well as with or without vacuum holes. Item K151822 features a thin, soft edge design for better finishing of contours.

#### TAPERED PSA PADS FOR DUAL ACTION (DA) TOOLS

DIA.	THREAD	GRADE	NO VAC HOLES	5 VAC HOLES	6 VAC HOLES	8 VAC HOLES	MAX. RPM	BOX QTY
5"	5/16-24	Med-Soft	<b>K151370</b>	K151365		K151392	12,000	1
5"	5/16-24	Med-Firm	<b>K151376</b>	K151378			14,000	
5"	5/16-24	Soft Edge	<b>K151822</b>				10,000	
6"	5/16-24	Med-Soft	<b>K151374</b>		K151372	K151387	10,000	
6"	5/16-24	Med-Firm	<b>K151380</b>		K151382		12,000	



*Bold part numbers denote stock items. Minimum Order Quantity (MOQ) for non-stock items. Call for details.*

## GRIPPER PADS FOR SURFACE CONDITIONING DISCS

Gripper pads have a taller T- or mushroom shaped hook style that is designed to lock into the scrim backing of surface conditioning material. Surface conditioning material should not be used with the shorter J-hooks found on Hook & Loop style pads. Similarly, gripper pads should not be used in combination with velour or hook & loop backed abrasive discs.

### Gripper Pads on 1/4" Shank

Small diameter pads featuring the Gripper-T surface and a 1/4" shank. They are used to operate plain surface conditioning discs on drills or tools with 1/4" collets.

#### GRIPPER PADS ON 1/4" SHANK

DIA.	SHANK	MEDIUM	MAX RPM	BOX QTY
2"	1/4"	K151364	19,000	1
3"	1/4"	K151366	11,000	
4"	1/4"	<b>K151347</b>	15,000	



### Gripper Pads for Straight Rotation Tools

The Gripper-T surface on an industrial grade backing. Each pad contains a 5/8-11 or M14 threaded arbor to easily spin onto a portable grinder. Koltec also offer a version with a 1/2" layer of foam between the pad and surface for softer performance.

#### GRIPPER PADS FOR STRAIGHT ROTATION TOOLS

DIA.	ARBOR	SOFT	MEDIUM	MAX RPM	BOX QTY
3-1/2"	5/8-11	K151403		13,285	1
4"	5/8-11		<b>K151350</b>	15,000	
4-1/2"	5/8-11		<b>K151352</b>	13,000	
4-1/2"	M14		<b>K151354</b>	13,000	
5"	5/8-11	K151404	<b>K151356</b>	12,000	
5"	M14		<b>K151358</b>	12,000	
6"	5/8-11		<b>K151348</b>	10,000	
7"	5/8-11	K151355	<b>K151360</b>	8,500	
7"	M14		K151362	8,500	
8"	5/8-11		K151359	7,570	



*Bold part numbers denote stock items. Minimum Order Quantity (MOQ) for non-stock items. Call for details.*

## GRIPPER PADS FOR SURFACE CONDITIONING DISCS

Gripper pads have a taller T- or mushroom shaped hook style that is designed to lock into the scrim backing of surface conditioning material. Surface conditioning material should not be used with the shorter J-hooks found on Hook & Loop style pads. Similarly, gripper pads should not be used in combination with velour or hook & loop backed abrasive discs.

### With Centering Pin

For use with surface conditioning discs with a knock out arbor. Allows operators to quickly and easily center the disc on the backing.

#### WITH CENTERING PIN

DIA.	ARBOR	MEDIUM	MAX RPM	BOX QTY
4-1/2"	5/8-11	<b>K151480</b>	13,000	1
5"	5/8-11	K151481	12,000	
7"	5/8-11	K151482	8,500	



### TIP:

NOT for use with discs which do not have the knock out arbor style!

*Bold part numbers denote stock items. Minimum Order Quantity (MOQ) for non-stock items. Call for details.*

## HAND SANDING ACCESSORIES

In addition to backing pads for power tools, Koltec offers an assortment of holders and pads for hand sanding. They are perfect for final touch-up, or removing light scratches and imperfections.

### FOR USE WITH HOOK & LOOP OR PSA SHEETS

Used with a 5" x 2-3/4" abrasive sheets.

#### Foam Blocks

Molded from soft foam and available in two shapes. Choose from Flat or Arched Back.

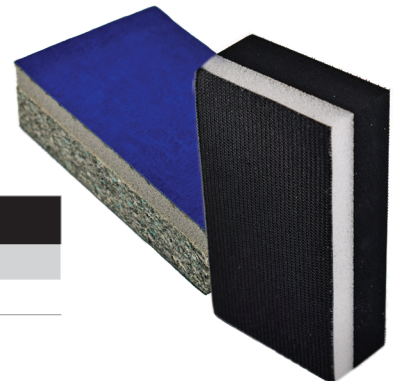
FOAM BLOCKS				
DIMENSIONS	SHAPE	H&L	PSA	BOX QTY
5" x 2-3/4"	Arched	<a href="#">K151252</a>	<a href="#">K151250</a>	1
5" x 2-3/4"	Flat	<a href="#">K151260</a>	<a href="#">K151258</a>	



#### Dual Side Sanding Blocks

Our dual sided blocks are made with two different foam densities and can be used on either side. The hard side can be used for sanding and breaking an edge. The soft side is suited for light sanding and finishing contours.

DUAL SIDE SANDING BLOCKS				
DIMENSIONS	GRADE	H&L	PSA	BOX QTY
5" x 2-3/4"	Soft/Firm	<a href="#">K151263</a>	<a href="#">K151265</a>	1



### FOR USE WITH HOOK & LOOP OR PSA DISCS

Works with standard abrasive discs in either PSA or Hook & Loop versions.

#### Half-Moon Sanders

Standard discs are folded in half around a foam core. They can then be used along the edge to hand sand inside corners and narrow channels.

HALF-MOON SANDERS			
DIMENSIONS	H&L	PSA	BOX QTY
5"	<a href="#">K151270</a>	<a href="#">K151269</a>	1
6"	<a href="#">K151272</a>	<a href="#">K151271</a>	



*Bold part numbers denote stock items. Minimum Order Quantity (MOQ) for non-stock items. Call for details.*

## HAND SANDING ACCESSORIES

### FOR USE WITH HOOK & LOOP OR PSA DISCS

Works with standard abrasive discs in either PSA or Hook & Loop versions.

#### Ergonomic Hand Sander

Each pad is made from molded foam with three finger grooves for comfort and grip. The abrasive disc wraps up both sides of the sander to hold it firmly in place, and create a flat work surface.



#### ERGONOMIC HAND SANDER

DIMENSIONS	H&L	PSA	BOX QTY
5"	<a href="#">K151245</a>	<a href="#">K151243</a>	1
6"	<a href="#">K151244</a>	<a href="#">K151242</a>	

#### Hand Pad with Adjustable Strap

Made from 1/4" thick circular foam pads with either a PSA or H&L surface. This allows full use of the abrasive disc as it conforms to the surface. An elastic strap on the back can be adjusted to fit any hand. These pads are well suited for finishing countoured surfaces.



#### HAND PAD WITH ADJUSTABLE STRAP

DIMENSIONS	H&L	PSA	BOX QTY
5"	<a href="#">K151775</a>	<a href="#">K151774</a>	1
6"	<a href="#">K151777</a>	<a href="#">K151778</a>	

#### Palm Sanders

Ball shaped to fit comfortably in the palm of your hand. The 3" and 5" sanders are made from foam and contain a water reservoir sponge in the center of the pad. The sponge can hold water for wet sanding applications. The 6" versions are made from a medium density foam and do not have a reservoir.



#### PALM SANDERS

DIA.	GRADE	RESERVOIR	H&L	PSA	BOX QTY
3"	Soft	Yes	K151268		1
5"	Soft	Yes	<a href="#">K151257</a>	<a href="#">K151256</a>	
6"	Medium	No	<a href="#">K151255</a>	<a href="#">K151253</a>	

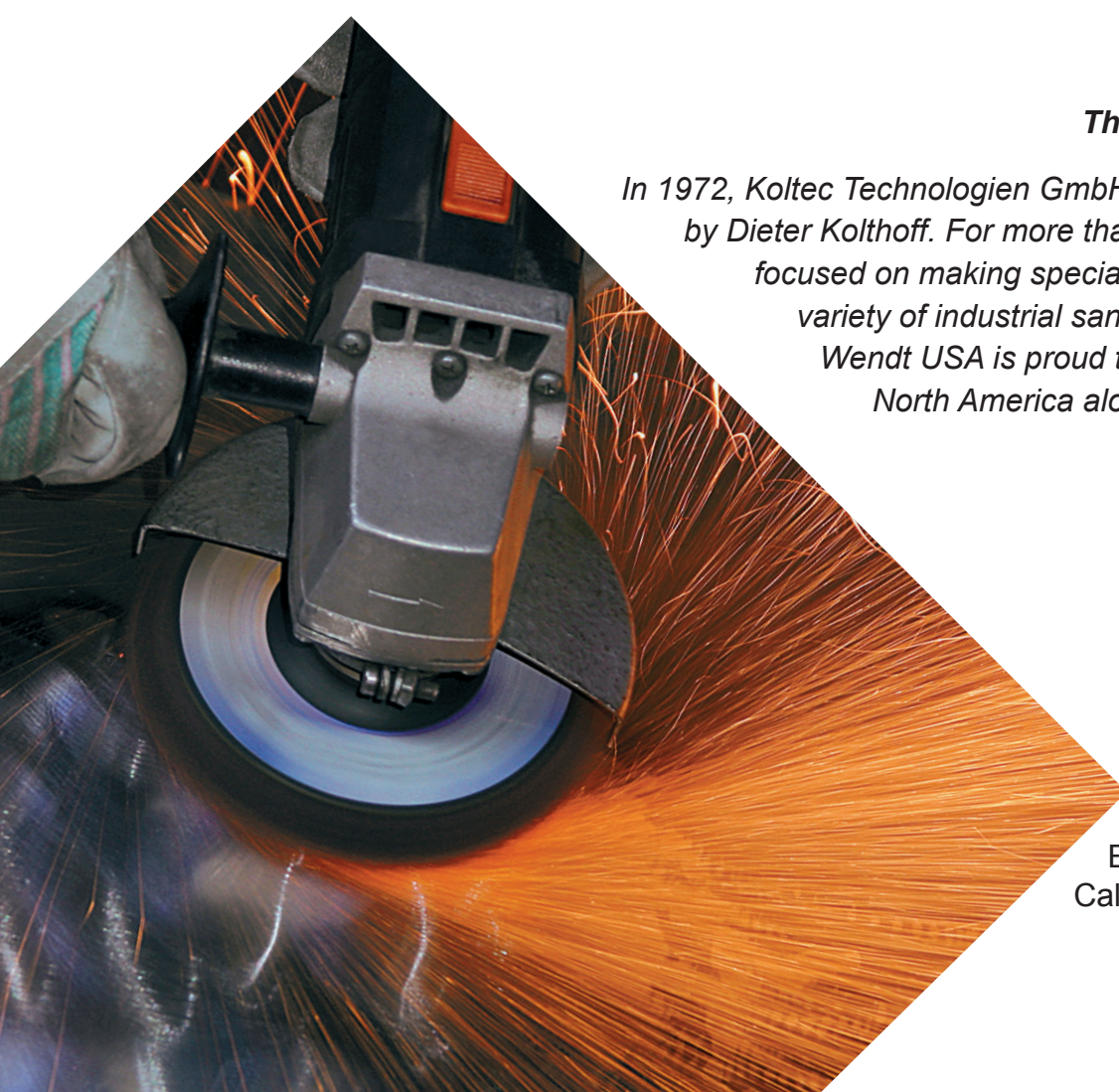
*Bold part numbers denote stock items. Minimum Order Quantity (MOQ) for non-stock items. Call for details.*



## THE BACKING PAD SPECIALISTS.

### *The Story Behind Our Pads...*

*In 1972, Koltec Technologien GmbH was founded in Switzerland by Dieter Kolthoff. For more than 50 years the company has focused on making specialty backing pads to support a variety of industrial sanding, and polishing products. Wendt USA is proud to represent the Koltec line in North America alongside our abrasive offering.*



**WENDT USA, LLC**  
1500 Clinton St. – Bldg. 7  
Buffalo, New York 14206 USA  
Call for Samples: 716.972.0333  
[www.wendtusa.com](http://www.wendtusa.com)